

INSTALLATION INSTRUCTIONS

DESCRIPTION: Rear Grab Bar Kit
 PART NUMBER: 2HC-F85E0-V0
 MODEL: YXZ1000R



⚠ WARNING

Please read and understand these instructions completely before installation to avoid possible injury, or damage to the accessory or vehicle.

WARRANTY INFORMATION:

Genuine Yamaha Accessories are covered by a one-year limited warranty against defects in material or workmanship. Labor for replacement of defective components is not covered. See your Yamaha dealer for a copy of the warranty statement.

NOTICE:

This installation requires a torque wrench and should be performed by an authorized Yamaha dealer or other qualified technician.

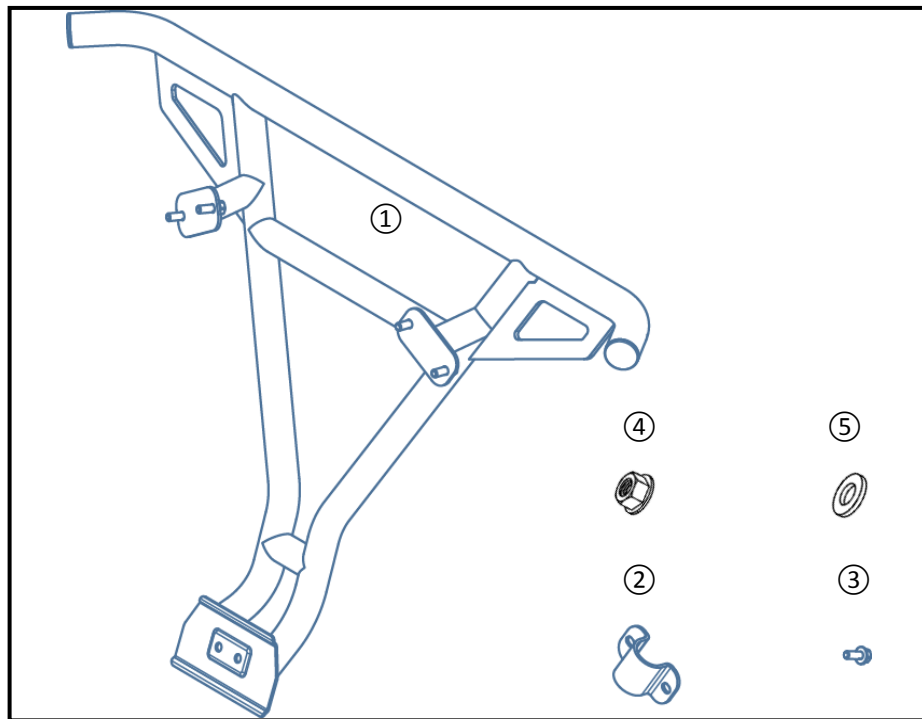
DEALER OR INSTALLER:

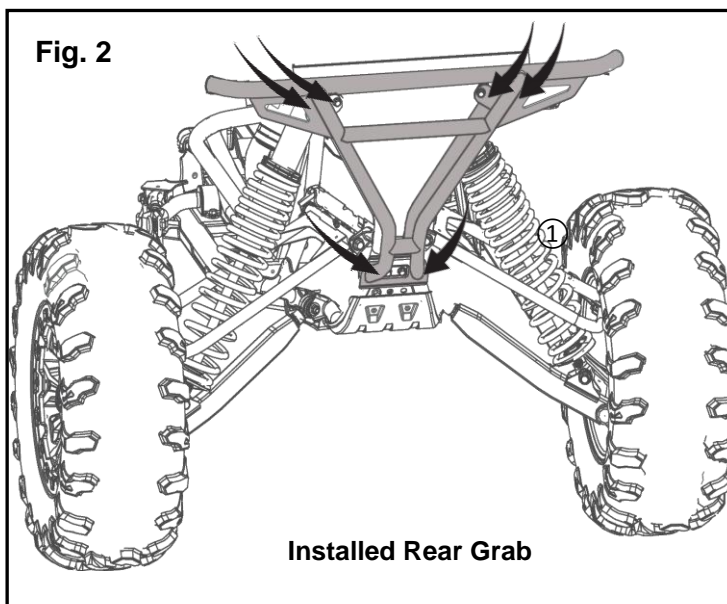
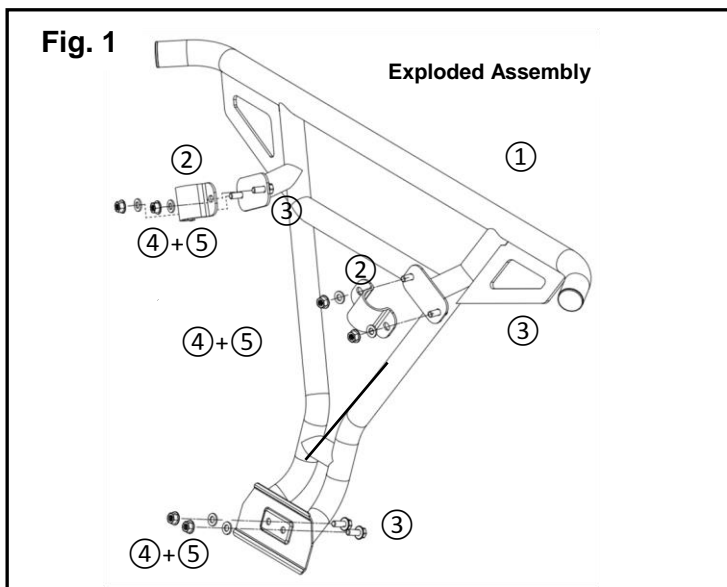
These instructions contain important information for future reference and *must* be given to the customer.

PARTS LIST:

No.	Part Number	Description	Qty
--	2HC-F85E0-V0	Rear Grab Bar Kit	--
①	*	Rear Grab Bar	1
②	*	Strap	2
③	*	M8x25mm Bolt	6
④	*	M8x12mm Nut	6
⑤	*	M8 Washer	6

* Part supplied with kit only and not available separately.





PREPARATION:

- Place the vehicle on a secure and level surface.
- Set the parking brake.
- Clean the mount surfaces before starting installation.

INSTALLATION:

1. Working from the rear of the vehicle at the base of the grab bar thread 2 M8x25mm Bolts (3) through the grab bar (1), frame, and into 2 M8 Washers (5) and 2 M8x12mm Nuts (4). Leave these hand tight.
2. Hold the grab bar straight and flush against the frame of the vehicle. Wrap straps (2), as shown in Fig.1, around the frame and align the holes in the straps with the holes in the grab bar mount plates.
3. Insert M8x25mm Bolts (3) through the mounting plates and straps and install M8 Washer (5) and M8x12mm Nuts (4). (Fig. 1).
3. Torque the M8x12mm Nuts to 34 Nm (3.4 m-kgf, 25.0 ft-lbf).

MAINTENANCE:

Periodically, check torque on all hardware. If loose hardware is found, re-torque to specification.

CARE AND CLEANING:

Clean painted metal parts with a clean soft cloth and mild soap and water. Rinse and dry.

CUSTOMER SERVICE:

For further information see your Yamaha dealer.

ESTIMATED TIME TO INSTALL: 0.6 HRS